

OK College-Going Rates & Participation in Developmental Education June 10, 2019

Dropout Information for 2017-2018

Oklahoma Definition:

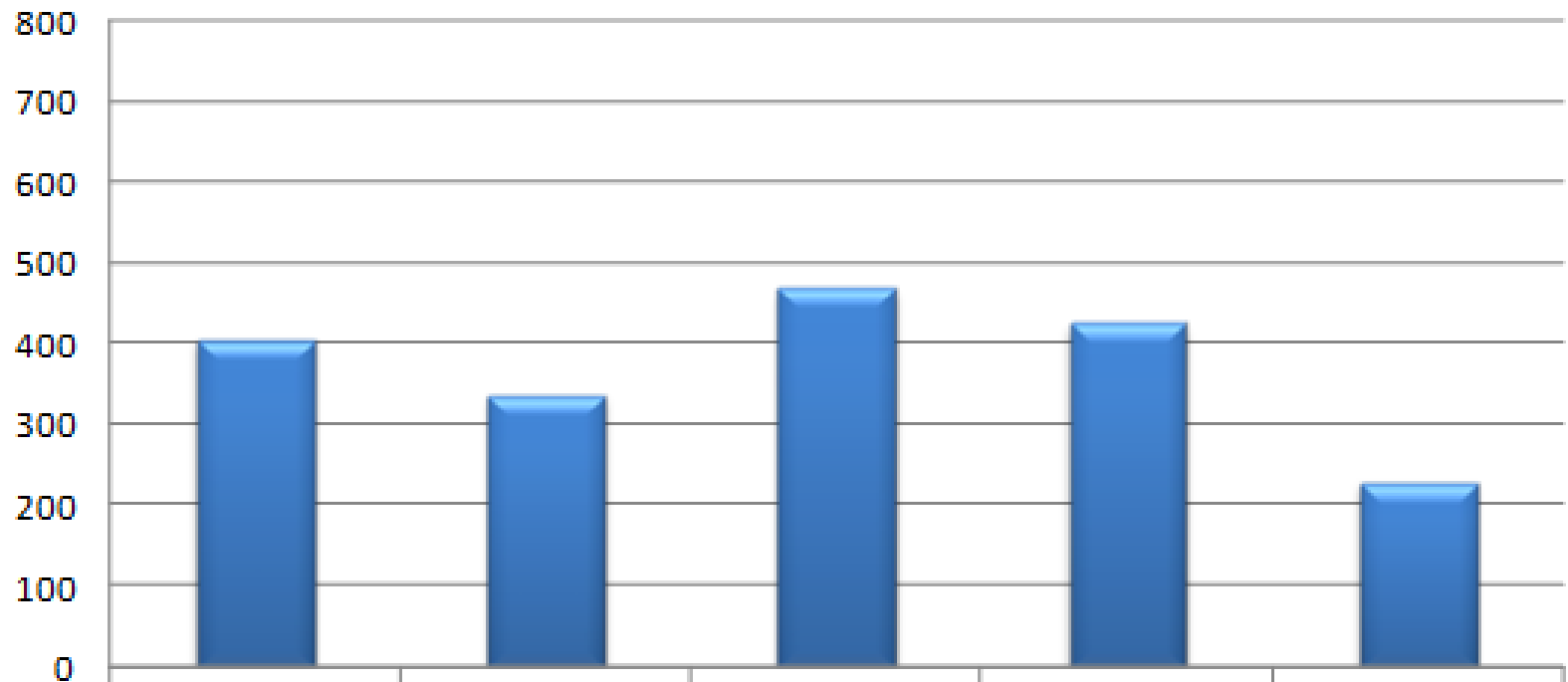
A school dropout is a student under the age of nineteen who has not graduated from high school and is not attending a public or private school or not otherwise receiving an education as a full time student.

Each school site that serves students in Grades K-12 is required to submit its accounting of dropouts to the State Department of Education. These reports are certified locally as an accurate accounting of the dropouts for each site. The current iteration of this online report is the **Comprehensive Exit Report**, which is completed in October using student data from the previous year.

Dropout summary information is only available for the preceding school year

Five Year Dropout Numbers

NUMBER OF STUDENT DROPOUTS*
2013-14 THROUGH 2017-18

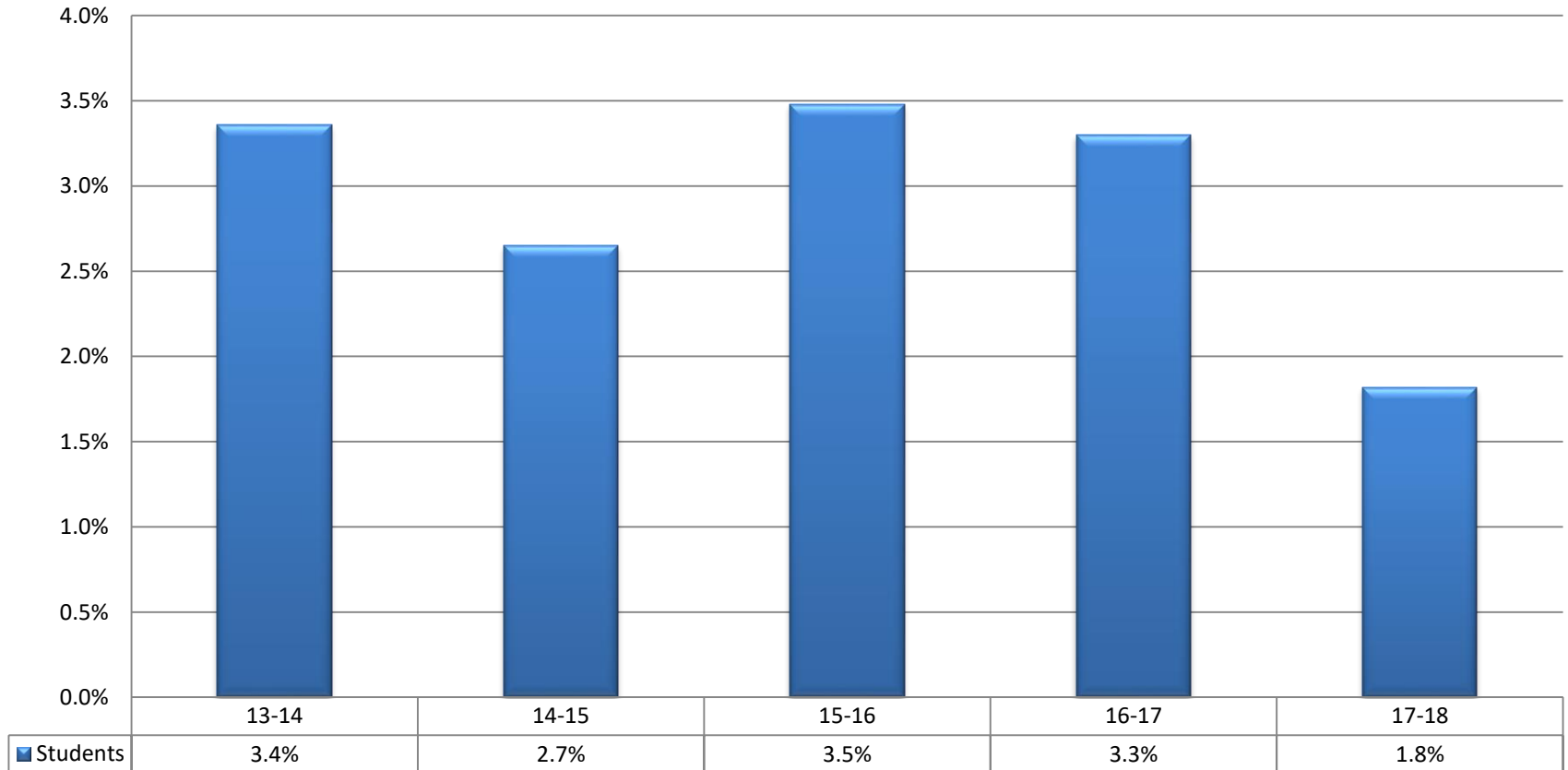


	13-14	14-15	15-16	16-17	17-18
Students	405	337	468	426	228

* Dropouts are reported for Grades 7-12

Five Year Dropout Rates

STUDENT DROPOUT RATE*
2013-14 THROUGH 2017-18



* Dropouts are reported for Grades 7-12

Dropout Rate by School Site

LOCATION	OCT 1 2017 ENROLLMENT (7-12)	DROPOUTS	DROPOUT RATE
BELLE ISLE	293	0	0.00%
CLASSEN MIDDLE	299	0	0.00%
DOUGLASS MIDDLE	170	0	0.00%
CENTENNIAL MIDDLE	206	1	0.49%
JEFFERSON	802	2	0.25%
JOHN MARSHALL MS	220	2	0.91%
NORTHEAST MIDDLE	96	3	3.13%
ROGERS	181	0	0.00%
ROOSEVELT	690	1	0.14%
TAFT	500	0	0.00%
WEBSTER	915	0	0.00%
CAPITOL HILL HS	1293	31	2.40%
CLASSEN HS	529	2	0.38%
DOUGLASS HS	412	3	0.73%
CENTENNIAL HS	314	2	0.64%
GRANT	1863	50	2.68%
JOHN MARSHALL HS	458	4	0.87%
NORTHEAST HS	179	1	0.56%
NW CLASSEN	1196	19	1.59%
SOUTHEAST	711	1	0.14%
STAR-SPENCER	331	4	1.21%
EMERSON	901	102	11.32%
DISTRICT	12559	228	1.82%

2017-2018 Annual Dropout Report					
District	Total Students Grades 9-12	Drop out Rate	Males	Femal es	Total Drop outs Grades 7- 12
PUTNAM CITY	5412	≤3	72	43	87
TULSA	8781	4.5	295	190	444
MIDWEST CITY-DEL CITY	3765	≤3	11	19	24
OKCPS	8091	≤3	140	94	197

Oklahoma State Regents for Higher Education

Participation in Developmental Education in 2016-17

2016 Oklahoma Public High School Graduates as Fall 2016 College Freshmen in Public Higher Education

High School	NUMBER	DEVELOPMENTAL STUDENTS									
	FRESHMAN	SCIENCE		ENGLISH		MATH		READING		UNDUPLICATED	
	STUDENTS	N	%	N	%	N	%	N	%	N	%
PUTNAM CITY	472	2	0.4%	83	17.6%	184	39.0%	49	10.4%	215	45.6%
TULSA PUBLIC SCHOOLS	733	13	1.8%	189	25.8%	355	48.4%	167	22.8%	421	57.4%
MIDWEST CITY DEL CITY	491	5	1.0%	136	27.7%	234	47.7%	12	2.4%	273	55.6%
OKCPS	576	4	0.7%	182	31.6%	335	58.2%	35	6.1%	367	63.7%
CHARTER SANTA FE SOUTH	61	0	0.0%	22	36.1%	40	65.6%	9	14.8%	44	72.1%
CHARTER: DOVE SCIENCE ACAD	35	0	0.0%	2	5.7%	8	22.9%	0	0.0%	8	22.9%
CHARTER: HARDING CHARTER	71	0	0.0%	2	2.8%	10	14.1%	2	2.8%	13	18.3%
CHARTER: HARDING FINE ARTS	36	0	0.0%	2	5.6%	18	50.0%	0	0.0%	18	50.0%
CHARTER: SEEWORTH ACADEMY	10	0	0.0%	5	50.0%	6	60.0%	2	20.0%	7	70.0%
Total OKCPS	789	4	0.5%	215	27.2%	417	52.9%	48	6.1%	457	57.9%

Enrollments in Oklahoma Colleges and Participation in Developmental Education Rates

The following data are derived from two reports produced by the **Oklahoma State Regents for Higher Education**

- *High School to College-Going Rates for Oklahoma High School Graduates to Oklahoma Colleges*
- *Developmental Education (Remediation) Rates for Oklahoma High School Graduates in Oklahoma Public Higher Education.*

Caveats

- Data are for only those students attending *Oklahoma* colleges and universities
- There are several private Oklahoma colleges and universities that do not participate in the Regents' Unitized Data System
- Each college or university has their own unique method of determining whether they recommend students take developmental classes – criteria differ between schools
- The data do not reflect students who received a GED or dropped out of high school prior to graduation but attended college as an adult or through admission to an “open-door” institution for which high school graduation is not required

Capitol Hill

Attending College

Class of 2015-16	Graduated		That Fall		That Year		That Year, Any Class			
	N		N	%	N	%	N			
	243		80	32.9%	86	35.4%	100			

Participation in Developmental Education Courses

High School Class	College Enrollment	Science		English		Math		Reading		Unduplicated	
		N	%	N	%	N	%	N	%	N	%
2002-03	31			19	61.3%	26	83.9%	1	3.2%	29	93.5%
2003-04	38			27	71.1%	27	71.1%	1	2.6%	32	84.2%
2004-05	38	1	2.6%	24	63.2%	23	60.5%	1	2.6%	29	76.3%
2005-06	32			22	68.8%	23	71.9%			25	78.1%
2006-07	28			18	64.3%	17	60.7%	1	3.6%	22	78.6%
2007-08	40			24	60.0%	31	77.5%	6	15.0%	35	87.5%
2008-09	28			12	42.9%	22	78.6%	1	3.6%	22	78.6%
2009-10	37			14	37.8%	25	67.6%	12	32.4%	28	75.7%
2010-11	7			4	57.1%	4	57.1%	2	28.6%	5	71.4%
2011-12	31			12	38.7%	20	64.5%	3	9.7%	23	74.2%
2012-13	40			24	60.0%	27	67.5%	2	5.0%	31	77.5%
2013-14	42			20	47.6%	37	88.1%	2	4.8%	37	88.1%
2014-15	65			20	30.8%	47	72.3%	7	10.8%	47	72.3%
2015-16	78			27	34.6%	59	75.6%	3	3.8%	61	78.2%

Classen

Attending College

Class of 2015-16	Graduated		That Fall		That Year		That Year, Any Class	
	N		N	%	N	%	N	
	105		60	57.1%	61	58.1%		64

Participation in Developmental Education Courses

High School Class	College Enrollment	Science		English		Math		Reading		Unduplicated	
		N	%	N	%	N	%	N	%	N	%
2002-03	79			8	10.1%	22	27.8%	1	1.3%	23	29.1%
2003-04	70	1	1.4%	4	5.7%	10	14.3%	1	1.4%	10	14.3%
2004-05	63			4	6.3%	20	31.7%			20	31.7%
2005-06	66			4	6.1%	12	18.2%			14	21.2%
2006-07	64	1	1.6%	3	4.7%	12	18.8%			12	18.8%
2007-08	75	1	1.3%	2	2.7%	11	14.7%	2	2.7%	12	16.0%
2008-09	75			6	8.0%	21	28.0%	2	2.7%	21	28.0%
2009-10	81			2	2.5%	12	14.8%			12	14.8%
2010-11	64					10	15.6%			10	15.6%
2011-12	72			1	1.4%	4	5.6%			5	6.9%
2012-13	84	1	1.2%	2	2.4%	11	13.1%			12	14.3%
2013-14	71			1	1.4%	13	18.3%	0	0.0%	13	18.3%
2014-15	70					13	18.6%	5	7.1%	15	21.4%
2015-16	55					10	18.2%			10	18.2%

Douglass

Attending College

Class of 2015-16	Graduated		That Fall		That Year		That Year, Any Class			
	N		N	%	N	%	N			
	63		28	44.4%	29	46.0%	43			

Participation in Developmental Education Courses

High School Class	College Enrollment	Science		English		Math		Reading		Unduplicated	
		N	%	N	%	N	%	N	%	N	%
2002-03	47	4	8.5%	19	40.4%	33	70.2%	5	10.6%	37	78.7%
2003-04	43	8	18.6%	17	39.5%	33	76.7%	2	4.7%	35	81.4%
2004-05	32	3	9.4%	14	43.8%	19	59.4%	3	9.4%	23	71.9%
2005-06	56	10	17.9%	30	53.6%	42	75.0%	2	3.6%	47	83.9%
2006-07	30	2	6.7%	8	26.7%	18	60.0%	3	10.0%	21	70.0%
2007-08	45	5	11.1%	22	48.9%	35	77.8%	3	6.7%	36	80.0%
2008-09	54	3	5.6%	29	53.7%	40	74.1%	9	16.7%	43	79.6%
2009-10	70	4	5.7%	20	28.6%	25	35.7%	8	11.4%	34	48.6%
2010-11	40	5	12.5%	13	32.5%	25	62.5%	7	17.5%	26	65.0%
2011-12	50	8	16.0%	23	46.0%	37	74.0%	9	18.0%	42	84.0%
2012-13	35	5	14.3%	19	54.3%	32	91.4%	4	11.4%	32	91.4%
2013-14	47	10	21.3%	22	46.8%	42	89.4%	6	12.8%	44	93.6%
2014-15	46	5	10.9%	18	39.1%	31	67.4%	6	13.0%	34	73.9%
2015-16	26	2	7.7%	13	50.0%	15	57.7%	6	23.1%	21	80.8%

Emerson

Attending College

Class of 2015-16	Graduated		That Fall		That Year		That Year, Any Class			
	N		N	%	N	%	N			
	205		25	12.2%	33	16.1%	52			

Participation in Developmental Education Courses

High School Class	College Enrollment	Science		English		Math		Reading		Unduplicated	
		N	%	N	%	N	%	N	%	N	%
2002-03	14			4	28.6%	9	64.3%			9	64.3%
2003-04	13			8	61.5%	7	53.8%	1	7.7%	9	69.2%
2004-05	19			7	36.8%	14	73.7%	1	5.3%	15	78.9%
2005-06	13			7	53.8%	9	69.2%			9	69.2%
2006-07	16			7	43.8%	12	75.0%			12	75.0%
2007-08	17	1	5.9%	10	58.8%	13	76.5%			15	88.2%
2008-09	23	1	4.3%	15	65.2%	13	56.5%	3	13.0%	18	78.3%
2009-10	30			15	50.0%	17	56.7%	12	40.0%	23	76.7%
2010-11	4*										
2011-12	14			8	57.1%	13	92.9%	2	14.3%	14	100.0%
2012-13	26			6	23.1%	15	57.7%	3	11.5%	15	57.7%
2013-14	32	1	3.1%	14	43.8%	20	62.5%	3	9.4%	23	71.9%
2014-15	29			20	69.0%	24	82.8%	7	24.1%	27	93.1%
2015-16	25	1	4.0%	7	28.0%	22	88.0%			22	88.0%

Grant

Attending College

Class of 2015-16	Graduated		That Fall		That Year		That Year, Any Class	
	N		N	%	N	%	N	
	297		99	33.3%	105	35.4%	141	

Participation in Developmental Education Courses

High School Class	College Enrollment	Science		English		Math		Reading		Unduplicated	
		N	%	N	%	N	%	N	%	N	%
2002-03	68			30	44.1%	47	69.1%	3	4.4%	52	76.5%
2003-04	61	1	1.6%	28	45.9%	39	63.9%	1	1.6%	48	78.7%
2004-05	58	1	1.7%	22	37.9%	29	50.0%			34	58.6%
2005-06	72	1	1.4%	30	41.7%	44	61.1%	2	2.8%	51	70.8%
2006-07	59	1	1.7%	28	47.5%	32	54.2%	4	6.8%	41	69.5%
2007-08	65			30	46.2%	41	63.1%			50	76.9%
2008-09	70	1	1.4%	33	47.1%	42	60.0%	3	4.3%	50	71.4%
2009-10	91	2	2.2%	31	34.1%	47	51.6%	25	27.5%	57	62.6%
2010-11	24			9	37.5%	15	62.5%	5	20.8%	17	70.8%
2011-12	98			46	46.9%	67	68.4%	5	5.1%	75	76.5%
2012-13	88			35	39.8%	57	64.8%	3	3.4%	59	67.0%
2013-14	90			33	36.7%	60	66.7%	5	5.6%	68	75.6%
2014-15	130			49	37.7%	85	65.4%	7	5.4%	96	73.8%
2015-16	97			32	33.0%	65	67.0%	5	5.2%	67	69.1%

John Marshall

Attending College

Class of 2015-16	Graduated		That Fall		That Year		That Year, Any Class			
	N		N	%	N	%	N			
	84		25	29.8%	28	33.3%	46			

Participation in Developmental Education Courses

High School Class	College Enrollment	Science		English		Math		Reading		Unduplicated	
		N	%	N	%	N	%	N	%	N	%
2002-03	72	4	5.6%	27	37.5%	44	61.1%	9	12.5%	49	68.1%
2003-04	67	8	11.9%	27	40.3%	43	64.2%	5	7.5%	50	74.6%
2004-05	79	5	6.3%	31	39.2%	52	65.8%	6	7.6%	56	70.9%
2005-06	63	4	6.3%	25	39.7%	35	55.6%	6	9.5%	38	60.3%
2006-07	42	2	4.8%	9	21.4%	19	45.2%	1	2.4%	23	54.8%
2007-08	44	2	4.6%	18	40.9%	33	75.0%	3	6.8%	36	81.8%
2008-09	34	2	5.9%	15	44.1%	24	70.6%	4	11.8%	28	82.4%
2009-10	41			14	34.1%	26	63.4%	7	17.1%	30	73.2%
2010-11	25	2	8.0%	12	48.0%	20	80.0%	5	20.0%	21	84.0%
2011-12	28	2	7.1%	15	53.6%	23	82.1%	5	17.9%	26	92.9%
2012-13	27	3	11.1%	6	22.2%	15	55.6%	1	3.7%	17	63.0%
2013-14	36			19	52.8%	32	88.9%	4	11.1%	32	88.9%
2014-15	31	1	3.2%	10	32.3%	21	67.7%	4	12.9%	24	77.4%
2015-16	23			6	26.1%	12	52.2%	1	4.3%	13	56.5%

Northeast

Attending College

Class of 2015-16	Graduated		That Fall		That Year		That Year, Any Class			
	N		N	%	N	%	N			
	52		33	63.5%	33	63.5%	39			

Participation in Developmental Education Courses

High School Class	College Enrollment	Science		English		Math		Reading		Unduplicated	
		N	%	N	%	N	%	N	%	N	%
2002-03	64	2	3.1%	6	9.4%	17	26.6%	2	3.1%	19	29.7%
2003-04	55	2	3.6%	10	18.2%	21	38.2%	4	7.3%	23	41.8%
2004-05	72	3	4.2%	10	13.9%	29	40.3%			29	40.3%
2005-06	49			6	12.2%	13	26.5%			15	30.6%
2006-07	30			2	6.7%	10	33.3%	1	3.3%	10	33.3%
2007-08	50	1	2.0%	8	16.0%	21	42.0%			25	50.0%
2008-09	51	1	2.0%	7	13.7%	17	33.3%	2	3.9%	21	41.2%
2009-10	50	1	2.0%	7	14.0%	20	40.0%	1	2.0%	23	46.0%
2010-11	25			4	16.0%	13	52.0%	2	8.0%	13	52.0%
2011-12	41			16	39.0%	26	63.4%	10	24.4%	30	73.2%
2012-13	34	1	2.9%	9	26.5%	22	64.7%	2	5.9%	23	67.6%
2013-14	34	1	2.9%	10	29.4%	18	52.9%	4	11.8%	24	70.6%
2014-15	25			4	16.0%	16	64.0%	3	12.0%	17	68.0%
2015-16	33			9	27.3%	19	57.6%	1	3.0%	22	66.7%

Northwest Classen

Attending College

Class of 2015-16	Graduated		That Fall		That Year		That Year, Any Class			
	N		N	%	N	%	N			
	210		82	39.0%	89	42.4%	117			

Participation in Developmental Education Courses

High School Class	College Enrollment	Science		English		Math		Reading		Unduplicated	
		N	%	N	%	N	%	N	%	N	%
2002-03				25	28.7%	47	54.0%	5	5.7%	49	56.3%
2003-04	96	1	1.0%	29	30.2%	60	62.5%	7	7.3%	62	64.6%
2004-05	79			37	46.8%	53	67.1%	8	10.1%	56	70.9%
2005-06	92	2	2.2%	39	42.4%	50	54.3%	9	9.8%	60	65.2%
2006-07	80			25	31.3%	37	46.3%	5	6.3%	43	53.8%
2007-08	69	1	1.5%	26	37.7%	39	56.5%	8	11.6%	45	65.2%
2008-09	87	1	1.1%	37	42.5%	45	51.7%	11	12.6%	55	63.2%
2009-10	93			21	22.6%	33	35.5%	18	19.4%	45	48.4%
2010-11	48			14	29.2%	30	62.5%	7	14.6%	31	64.6%
2011-12	67			21	31.3%	39	58.2%	8	11.9%	46	68.7%
2012-13	77	1	1.3%	30	39.0%	47	61.0%	5	6.5%	52	67.5%
2013-14	74			28	37.8%	32	43.2%	10	13.5%	43	58.1%
2014-15	90			23	25.6%	47	52.2%	4	4.4%	51	56.7%
2015-16	78	1	1.3%	25	32.1%	38	48.7%	10	12.8%	46	59.0%

Oklahoma Centennial

Attending College

Class of 2015-16	Graduated		That Fall		That Year		That Year, Any Class	
	N		N	%	N	%	N	
	70		30	42.9%	32	45.7%	41	

Participation in Developmental Education Courses

High School Class	College Enrollment	Science		English		Math		Reading		Unduplicated	
		N	%	N	%	N	%	N	%	N	%
2009-10	10			4	4.0%	9	90.0%	1	10.0%	9	90.0%
2010-11	18			5	27.8%	13	72.2%			14	77.8%
2011-12	20			8	40.0%	15	75.0%	3	15.0%	18	90.0%
2012-13	16	4	25.0%	8	50.0%	13	81.3%	3	18.8%	13	81.3%
2013-14	20	1	5.0%	11	55.0%	15	75.0%	3	15.0%	16	80.0%
2014-15	23	1	4.3%	8	34.8%	19	82.6%	6	26.1%	20	87.0%
2015-16	28			16	57.1%	23	82.1%	2	7.1%	24	85.7%

Southeast

Attending College

Class of 2015-16	Graduated		That Fall		That Year		That Year, Any Class			
	N		N	%	N	%	N			
	167		93	55.7%	97	58.1%	127			

Participation in Developmental Education Courses

High School Class	College Enrollment	Science		English		Math		Reading		Unduplicated	
		N	%	N	%	N	%	N	%	N	%
2002-03	94	1	1.1%	35	37.2%	60	63.8%	4	4.3%	67	71.3%
2003-04	76	1	1.3%	34	44.7%	46	60.5%	1	1.3%	51	67.1%
2004-05	88	3	3.4%	31	35.2%	55	62.5%	1	1.1%	60	68.2%
2005-06	80	3	3.8%	22	27.5%	53	66.3%	3	3.8%	56	70.0%
2006-07	69			20	29.0%	35	50.7%	2	2.9%	39	56.5%
2007-08	65			23	35.4%	37	56.9%			44	67.7%
2008-09	78	6	7.7%	35	44.9%	45	57.7%	8	10.3%	61	78.2%
2009-10	87			17	19.5%	38	43.7%	13	14.9%	43	49.4%
2010-11	17			5	29.4%	7	41.2%	1	5.9%	8	47.1%
2011-12	65	1	1.5%	12	18.5%	35	53.8%	2	3.1%	35	53.8%
2012-13	75			20	26.7%	36	48.0%	4	5.3%	39	52.0%
2013-14	63			15	23.8%	34	54.0%	4	6.3%	39	61.9%
2014-15	71			14	19.7%	32	45.1%	3	4.2%	33	46.5%
2015-16	88			22	25.0%	39	44.3%	6	6.8%	43	48.9%

Star Spencer

Attending College

Class of 2015-16	Graduated		That Fall		That Year		That Year, Any Class	
	N		N	%	N	%	N	
	85		44	51.8%	48	56.5%		70

Participation in Developmental Education Courses

High School Class	College Enrollment	Science		English		Math		Reading		Unduplicated	
		N	%	N	%	N	%	N	%	N	%
2002-03	57	3	5.3%	27	47.4%	41	71.9%	5	8.8%	46	80.7%
2003-04	32	3	9.4%	10	31.3%	20	62.5%	2	6.3%	22	68.8%
2004-05	40			14	35.0%	18	45.0%	1	2.5%	22	55.0%
2005-06	44	2	4.5%	20	45.5%	24	54.5%	2	4.5%	29	65.9%
2006-07	43	5	11.6%	22	51.2%	29	67.4%	6	14.0%	32	74.4%
2007-08	63	7	11.1%	29	46.0%	42	66.7%	3	4.8%	46	73.0%
2008-09	43	2	4.7%	24	55.8%	32	74.4%	6	14.0%	37	86.0%
2009-10	68	7	10.3%	26	38.2%	40	58.8%	13	19.1%	54	79.4%
2010-11	52	4	7.7%	24	46.2%	37	71.2%	5	9.6%	44	84.6%
2011-12	44	3	6.8%	22	50.0%	37	84.1%	9	20.5%	38	86.4%
2012-13	75			20	26.7%	36	48.0%	4	5.3%	39	52.0%
2013-14	34	2	5.9%	22	64.7%	31	91.2%	2	5.9%	33	97.1%
2014-15	27			7	25.9%	21	77.8%	2	7.4%	22	81.5%
2015-16	44			25	56.8%	33	75.0%	1	2.3%	38	86.4%

Dove Science Academy

Attending College

Class of 2015-16	Graduated		That Fall		That Year		That Year, Any Class	
	N		N	%	N	%	N	
	47		35	74.5%	36	76.6%	38	

Participation in Developmental Education Courses

High School Class	College Enrollment	Science		English		Math		Reading		Unduplicated	
		N	%	N	%	N	%	N	%	N	%
2005-06	7	1	14.3%			2	28.6%			3	42.9%
2006-07	5*										
2007-08	7					3	42.9%	1	14.3%	3	42.9%
2008-09	29	1	3.4%	3	10.3%	11	37.9%			11	37.9%
2009-10	33					9	27.3%	1	3.0%	9	27.3%
2010-11	22			1	4.5%	5	22.7%	1	4.5%	5	22.7%
2011-12	35			3	8.6%	8	22.9%	1	2.9%	8	22.9%
2013-14	35			5	14.3%	7	20.0%	1	2.9%	8	22.9%
2014-15	49			4	8.2%	6	12.2%	2	4.1%	8	16.3%
2015-16	35	0	0.0%	2	5.7%	8	22.9%	0	0.0%	8	22.9%

Harding Fine Arts

Attending College

Class of 2015-16	Graduated		That Fall		That Year		That Year, Any Class	
	N		N	%	N	%	N	
	72		36	50.0%	38	52.8%	48	

Participation in Developmental Education Courses

High School Class	College Enrollment	Science		English		Math		Reading		Unduplicated	
		N	%	N	%	N	%	N	%	N	%
2009-10	7			1	14.3%	4	57.1%			4	57.1%
2010-11	5*										
2011-12	24			3	12.5%	14	58.3%	2	8.3%	14	58.3%
2012-13	40			4	10.0%	20	50.0%			20	50.0%
2013-14	45	1	2.2%	9	20.0%	22	48.9%	1	2.2%	23	51.1%
2014-15	51			5	9.8%	17	33.3%	2	3.9%	20	39.2%
2015-16	36	0	0.0%	2	5.6%	18	50.0%	0	0.0%	18	50.0%

Harding Charter Prep

Attending College

Class of 2015-16	Graduated		That Fall		That Year		That Year, Any Class	
	N		N	%	N	%	N	
	103		78	75.7%	78	75.7%		96

Participation in Developmental Education Courses

High School Class	College Enrollment	Science		English		Math		Reading		Unduplicated	
		N	%	N	%	N	%	N	%	N	%
2006-07	0										
2007-08	24					6	25.0%	1	4.2%	6	25.0%
2008-09	28			1	3.6%	5	17.9%			5	17.9%
2009-10	42			4	9.5%	8	19.0%	4	9.5%	10	23.8%
2010-11	57			5	8.8%	15	26.3%	4	7.0%	16	28.1%
2011-12	72			10	13.9%	26	36.1%	3	4.2%	29	40.3%
2012-13	68	1	1.5%	8	11.8%	15	22.1%	1	1.5%	19	27.9%
2013-14	71	1	1.4%	1	1.4%	12	16.9%			12	16.9%
2014-15	71			3	4.2%	12	16.9%	3	4.2%	14	19.7%
2015-16	71	0	0.0%	2	2.8%	10	14.1%	2	2.8%	13	18.3%

Santa Fe South

Attending College

Class of 2015-16	Graduated		That Fall		That Year		That Year, Any Class	
	N		N	%	N	%	N	
	165		66	40.0%	68	41.2%	80	

Participation in Developmental Education Courses

High School Class	College Enrollment	Science		English		Math		Reading		Unduplicated	
		N	%	N	%	N	%	N	%	N	%
2003-04	0										
2004-05	22			11	50.0%	12	54.5%	1	4.5%	14	63.6%
2005-06	4*										
2006-07	4*										
2007-08	17			7	41.2%	9	52.9%	3	17.7%	10	58.8%
2008-09	18			8	44.4%	15	83.3%	9	50.0%	17	94.4%
2009-10	28			8	28.6%	14	50.0%	4	14.3%	16	57.1%
2010-11	26			9	34.6%	16	61.5%	4	15.4%	18	69.2%
2011-12	47			15	31.9%	36	76.6%	3	6.4%	39	83.0%
2012-13	54			22	40.7%	37	68.5%	7	13.0%	41	75.9%
2013-14	54			18	33.3%	28	51.9%	6	11.1%	35	64.8%
2014-15	75			21	28.0%	37	49.3%	8	10.7%	42	56.0%
2015-16	61	0	0.0%	22	36.1%	40	65.6%	9	14.8%	44	72.1%

Seeworth

Attending College

Class of 2015-16	Graduated		That Fall		That Year		That Year, Any Class			
	N		N	%	N	%	N			
	83		10	12.0%	10	12.0%	18			

Participation in Developmental Education Courses

High School Class	College Enrollment	Science		English		Math		Reading		Unduplicated	
		N	%	N	%	N	%	N	%	N	%
2006-07	1*										
2007-08	1*										
2008-09	2*										
2009-10	2*										
2010-11	6	2	33.3%	4	66.7%	6	100.0%	1	16.7%	6	100.0%
2011-12	10			8	80.0%	9	90.0%	3	30.0%	9	90.0%
2012-13	9			8	88.9%	9	100.0%			9	100.0%
2013-14	13			5	38.5%	10	76.9%			12	92.3%
2014-15	5*										
2015-16	10	0	0.0%	5	50.0%	6	60.0%	2	20.0%	7	70.0%

* Data for 5 or fewer students are not reported for confidentiality purposes

**2016-17 First-Time-Entering College Students
in Oklahoma Colleges
from OKCPS High Schools
Ranked by attendance "That Year"**

High School	Class of 2016 Graduates	That Fall		That Year		That Year Any Class
		N	%	N	%	
DOVE SCIENCE ACADEMY - OKC	47	35	74.5%	36	76.6%	38
HARDING CHARTER PREPARATORY HS	103	78	75.7%	78	75.7%	96
NORTHEAST HS	52	33	63.5%	33	63.5%	39
CLASSEN HS OF ADVANCED STUDIES	105	60	57.1%	61	58.1%	64
SOUTHEAST HS	167	93	55.7%	97	58.1%	127
STAR SPENCER HS	85	44	51.8%	48	56.5%	70
HARDING FINE ARTS ACADEMY	72	36	50.0%	38	52.8%	48
DOUGLASS HS	63	28	44.4%	29	46.0%	43
OKLAHOMA CENTENNIAL HS	70	30	42.9%	32	45.7%	41
NORTHWEST CLASSEN HS	210	82	39.0%	89	42.4%	117
SANTA FE SOUTH HS	165	66	40.0%	68	41.2%	80
CAPITOL HILL HS	243	80	32.9%	86	35.4%	100
U. S. GRANT HS	297	99	33.3%	105	35.4%	141
JOHN MARSHALL HS	84	25	29.8%	28	33.3%	46
EMERSON ALTERNATIVE ED. HS	205	25	12.2%	33	16.1%	52
JUSTICE A.W. SEEWORTH ACADEMY	83	10	12.0%	10	12.0%	18
Total all sites	2,051	824	40.2%	871	42.5%	1,120
Total non charter	1,581	599	37.9%	641	40.5%	840
Total charter	470	225	47.9%	230	48.9%	280

Proactive Plans for Dropouts

- Changes to Night School for this year to allow more access to students across the district:
 - Night School was free to all students.
 - Locations moved to Alt Edu sites for central location.
 - Blended-learning used at each site.
 - Schools outside of the district could not participate.
- Emerson North & South Total number of student enrolled.
 - Emerson North Night School enrollment = 45 students w/credit
 - Emerson South Night School enrollment = 63 students w/credit

Proactive Plans for Dropouts

- Students are allowed to recovery credits through Fuel Ed during the school year.
- Summer Academy for students in need of credit recovery.
- Increased number of seats in Alternative Schools to support students with credit deficiencies. Students are able to accelerate credit recovery, then return to home school for graduation.
 - Emerson North HS enrollment = 461
 - Emerson South HS enrollment = 441
 - Emerson South MS enrollment = 56
 - Metro-Career Academy enrollment = 60

Proactive Plans for Dropouts

- After-school tutoring was offered at sites to allow students to receive additional supports with academic progress.
- Adding Attendance Advocate/Truancy Officer to the Title I menu for positions that can be added to Secondary Manpower's'. These positions will work with the site administration to identify students with chronic absenteeism issue and work with the student and their families.

Proactive Plans for Increasing College Remediation Rates

- Student enrollment in AP courses remains constant, however, more students scoring 3+ on AP test.
 - 400 students to 493 students.
- Concurrent enrollment numbers continue to increase at all sites.
 - 123 students currently enrolled in concurrent enrollment

Oklahoma City Public Schools

www.okcps.org