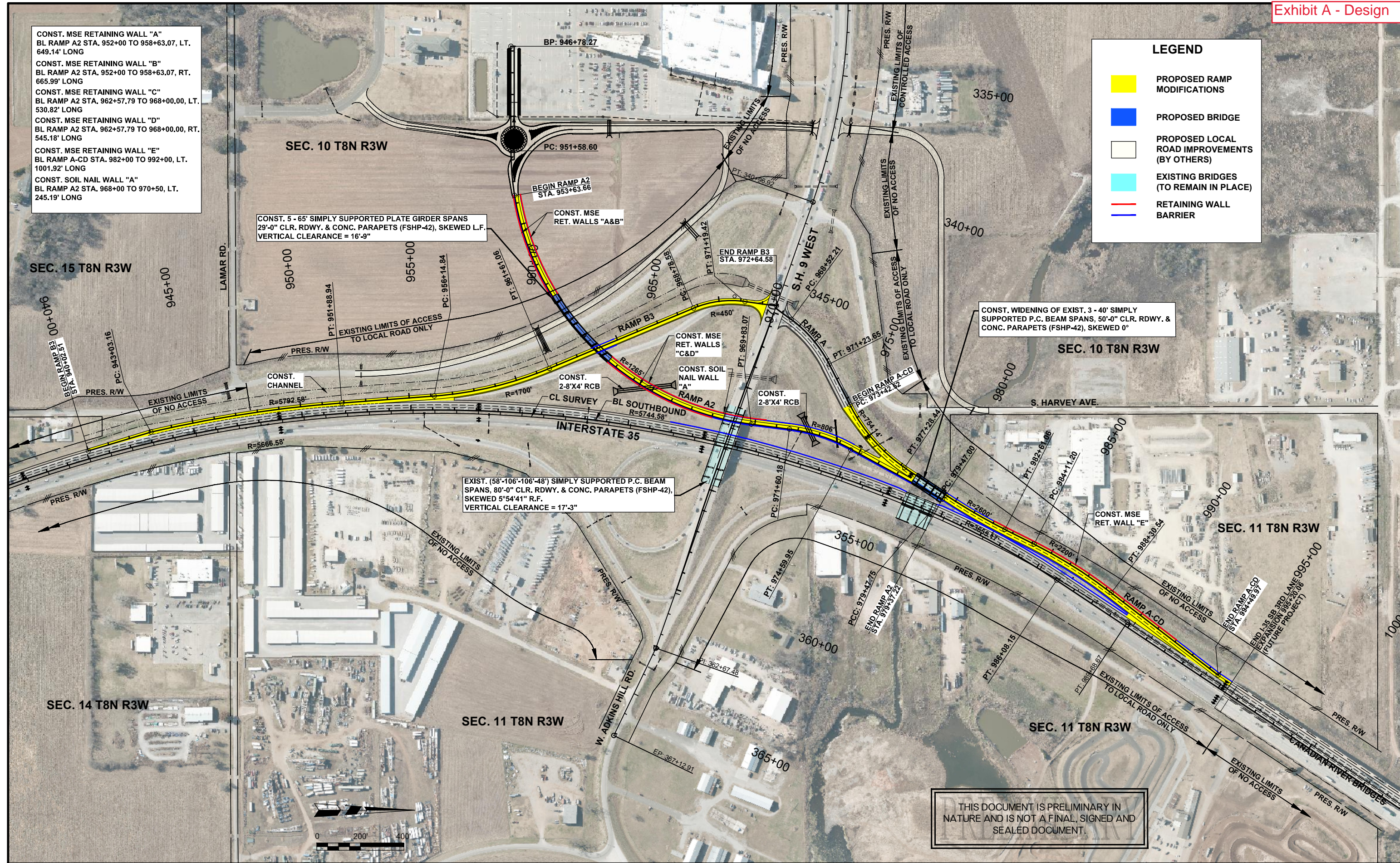


- CONST. MSE RETAINING WALL "A"
BL RAMP A2 STA. 952+00 TO 958+63.07, LT.
649.14' LONG
- CONST. MSE RETAINING WALL "B"
BL RAMP A2 STA. 952+00 TO 958+63.07, RT.
665.99' LONG
- CONST. MSE RETAINING WALL "C"
BL RAMP A2 STA. 962+57.79 TO 968+00.00, LT.
530.82' LONG
- CONST. MSE RETAINING WALL "D"
BL RAMP A2 STA. 962+57.79 TO 968+00.00, RT.
545.18' LONG
- CONST. MSE RETAINING WALL "E"
BL RAMP A-CD STA. 982+00 TO 992+00, LT.
1001.92' LONG
- CONST. SOIL NAIL WALL "A"
BL RAMP A2 STA. 968+00 TO 970+50, LT.
245.19' LONG

LEGEND

- PROPOSED RAMP MODIFICATIONS
- PROPOSED BRIDGE
- PROPOSED LOCAL ROAD IMPROVEMENTS (BY OTHERS)
- EXISTING BRIDGES (TO REMAIN IN PLACE)
- RETAINING WALL BARRIER



THIS DOCUMENT IS PRELIMINARY IN NATURE AND IS NOT A FINAL, SIGNED AND SEALED DOCUMENT.