

Oklahoma County Detention Center
New Site Location – Immediate Vicinity Analysis

Existing OCDC Site Acreage: 7.8 Acres – See Exhibit 1

David L. Moss (Tulsa) Acreage: 19.1 Acres – See Exhibit 2

- 2-story 2,020 bed facility
- Approximately 106 beds per acre

New Site Acreage Requirement:

- Beds Needed: 1,400
- 13.2 Acres at 106 beds per acre

Immediate Vicinity Acquisitions:

1. Northern Site: 8.8 Acres – See Exhibit 3
 - a. Total Acreage combined w/ Existing: 16.6 Acres
 - b. NOT INCLUDED: Northern Power Station: 1.6 Acres
2. Southern Site: 6.4 Acres – See Exhibit 4
 - a. Total Acreage combined w/ Existing: 14.2 Acres

Northern and Southern Acquisitions Total: 15.2 Acres

- Combined with Existing: 23 Acres

Additional Immediate Vicinity Acquisitions:

1. Eastern Acquisition (Old City Jail): 2.1 Acres – See Exhibit 5
 - a. When Combined w/ North/South/Existing: 25.1 Acres
2. Total Western Vicinity: 36.2 Acres
 - a. Western Acquisition 1: 13.8 Acres – See Exhibit 6
 - b. Western 2: 11.8 Acres – See Exhibit 7
 - c. Western 3: 10.6 Acres – See Exhibit 8



Current OCDC Facility Acreage

Perimeter
761.61 m

Area
7.87 ac

Edit

7.8
ACRES

Oklahoma county
detention center

Armor Correctional
Detention

Court Clerk



**19.1
ACRES**

Tulsa County Jail
Mental Health Pod

David L. Moss
Criminal Justice Center

Salvation Army

 David L Moss

Perimeter
1,016.86 m

Area
19.09 ac

 Edit

EXHIBIT 2

EXHIBIT 2

 Northern Acquisition

Perimeter
622.22 m

Area
8.76 ac

 Edit

**NORTHERN
8.7 ACRES**

Oklahoma Ci
Communica

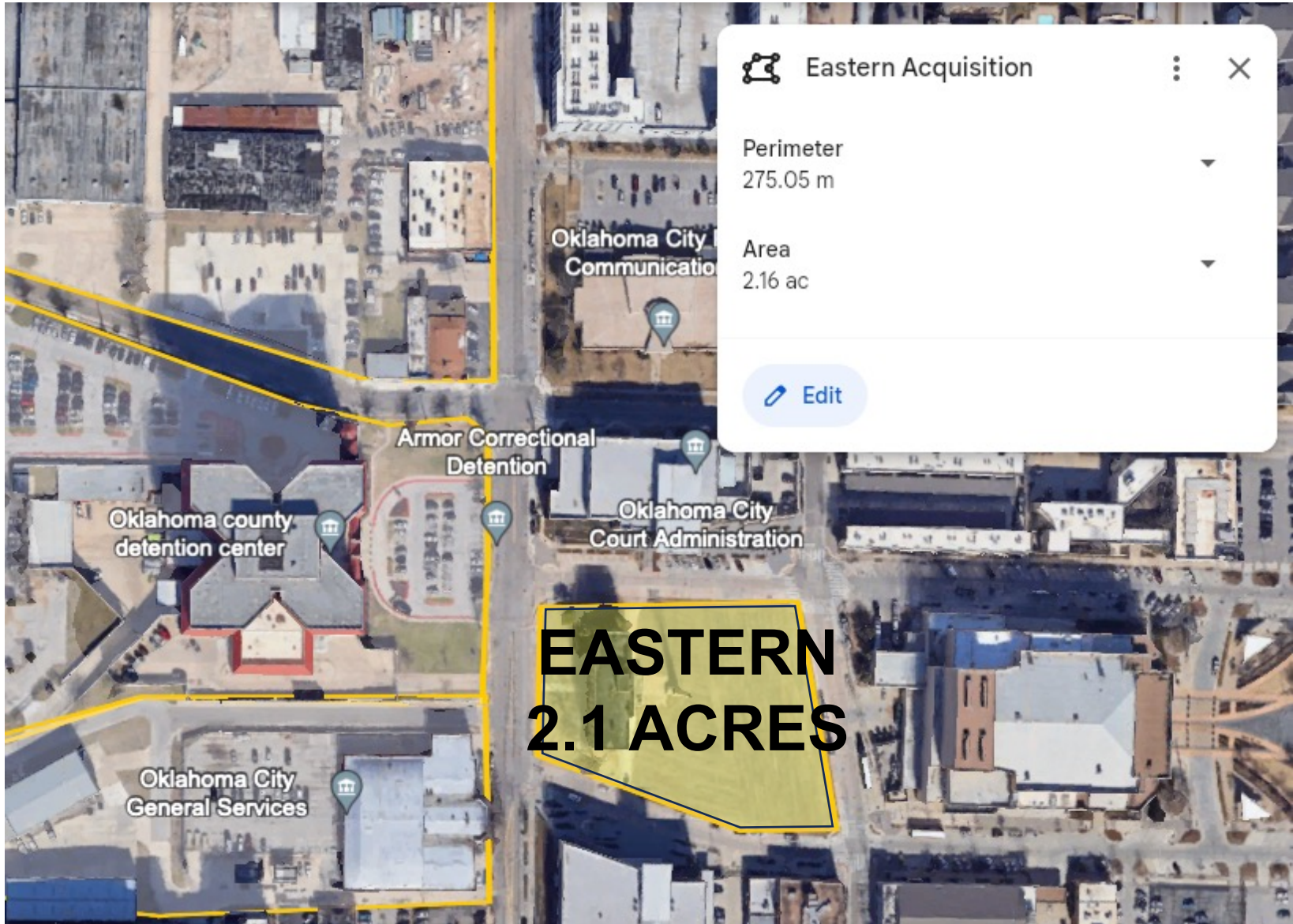
Armor Correctional
Detention

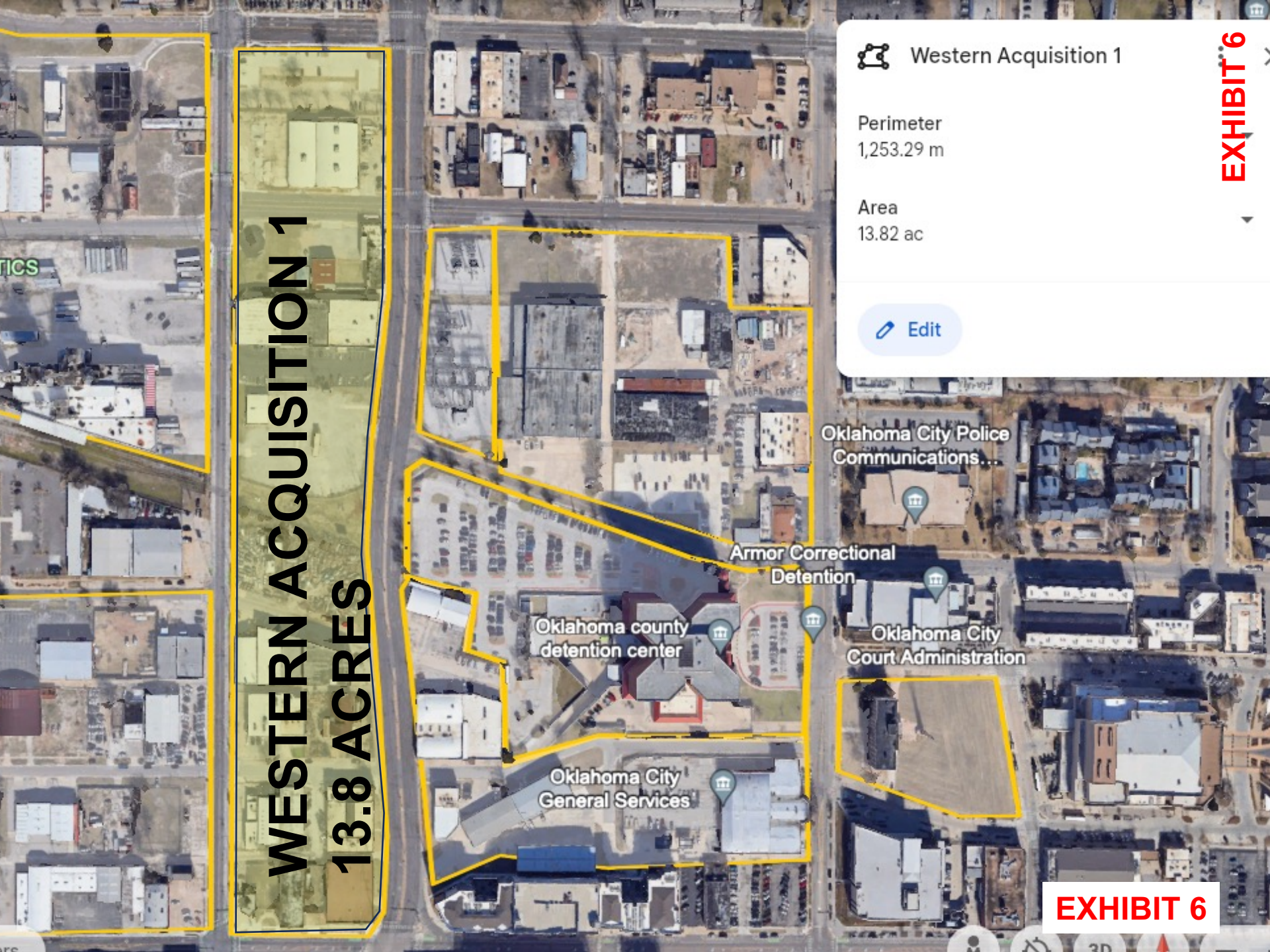
Oklahoma county
detention center

Oklahoma City
Court Administration

Oklahoma City
General Services







WESTERN ACQUISITION 1
13.8 ACRES



Western Acquisition 1

Perimeter
1,253.29 m

Area
13.82 ac

[Edit](#)

EXHIBIT 6

Oklahoma City Police
Communications...

Armor Correctional
Detention

Oklahoma county
detention center

Oklahoma City
Court Administration

Oklahoma City
General Services

EXHIBIT 6



