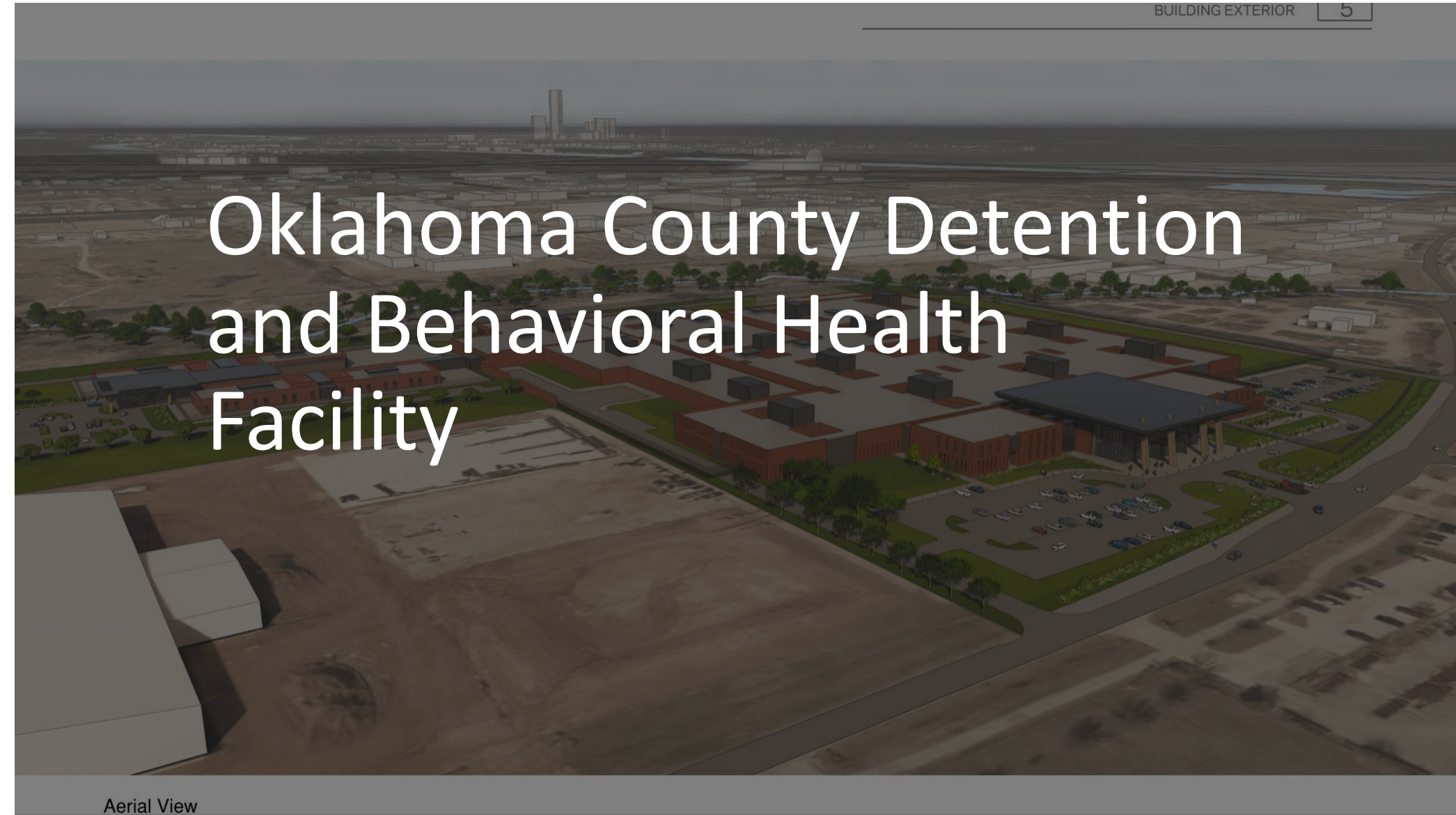


Oklahoma County Detention and Behavioral Health Facility

Aerial View



Detention Center



Detention Center



Behavioral Care Center Entry View



The Site

E. GRAND BOULEVARD

S. BRYANT AVENUE

S.E. 22nd STREET



Arial View

Detention Center

Behavioral Health

Grand Blvd.

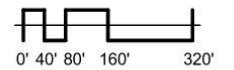




OVERALL FLOOR PLAN LEGEND

- A. LOBBY
- B. INTAKE
- C. MEDICAL
- D. INMATE SERVICE
- E. LAUNDRY
- F. FOOD SERVICE
- G. STANDARD HOUSING - MAXIMUM
- G. STANDARD HOUSING - DORMITORY
- G. STANDARD HOUSING - MEDIUM
- G. STANDARD HOUSING - MINIMUM
- H. WAREHOUSE MAINTENANCE
- H. CENTRAL UTILITY PLAN
- I. STAFF SERVICE
- J. NON-INCARCERATED BEHAVIORAL CARE CENTER
- K. INCARCERATED BEHAVIORAL HOUSING
- COURTYARD
- LIGHTWELL
- OUTDOOR RECYARD
- SECURE CIRCULATION
- STAFF COURTYARD
- MECH. YARD

OVERALL FLOOR PLAN

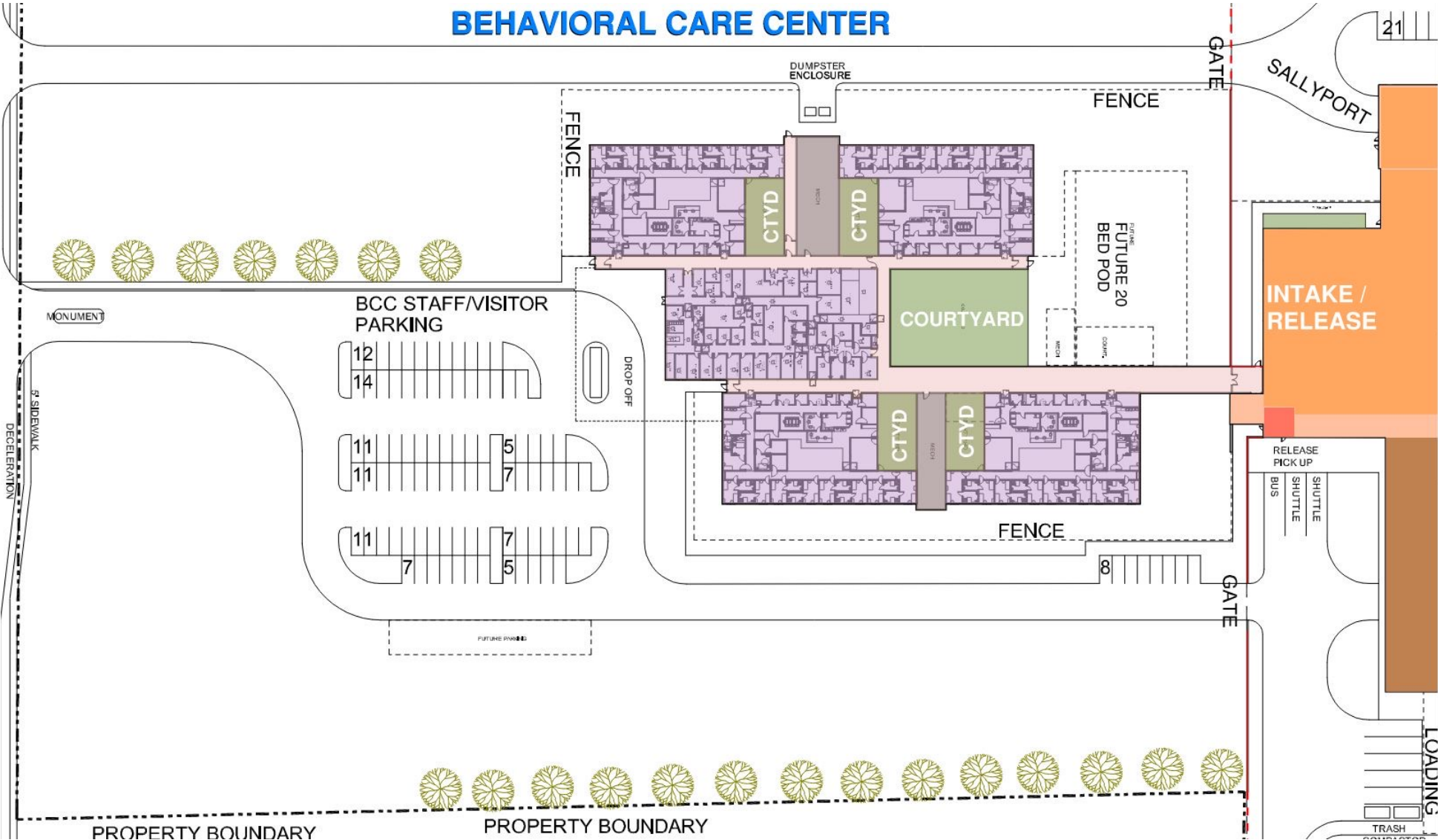


Overall Floor Plan

PROPERTY BOUNDARY

22nd STREET

BEHAVIORAL CARE CENTER



THE NEED: 2,400 BEDS

CURRENT JAIL: 1,800 BEDS

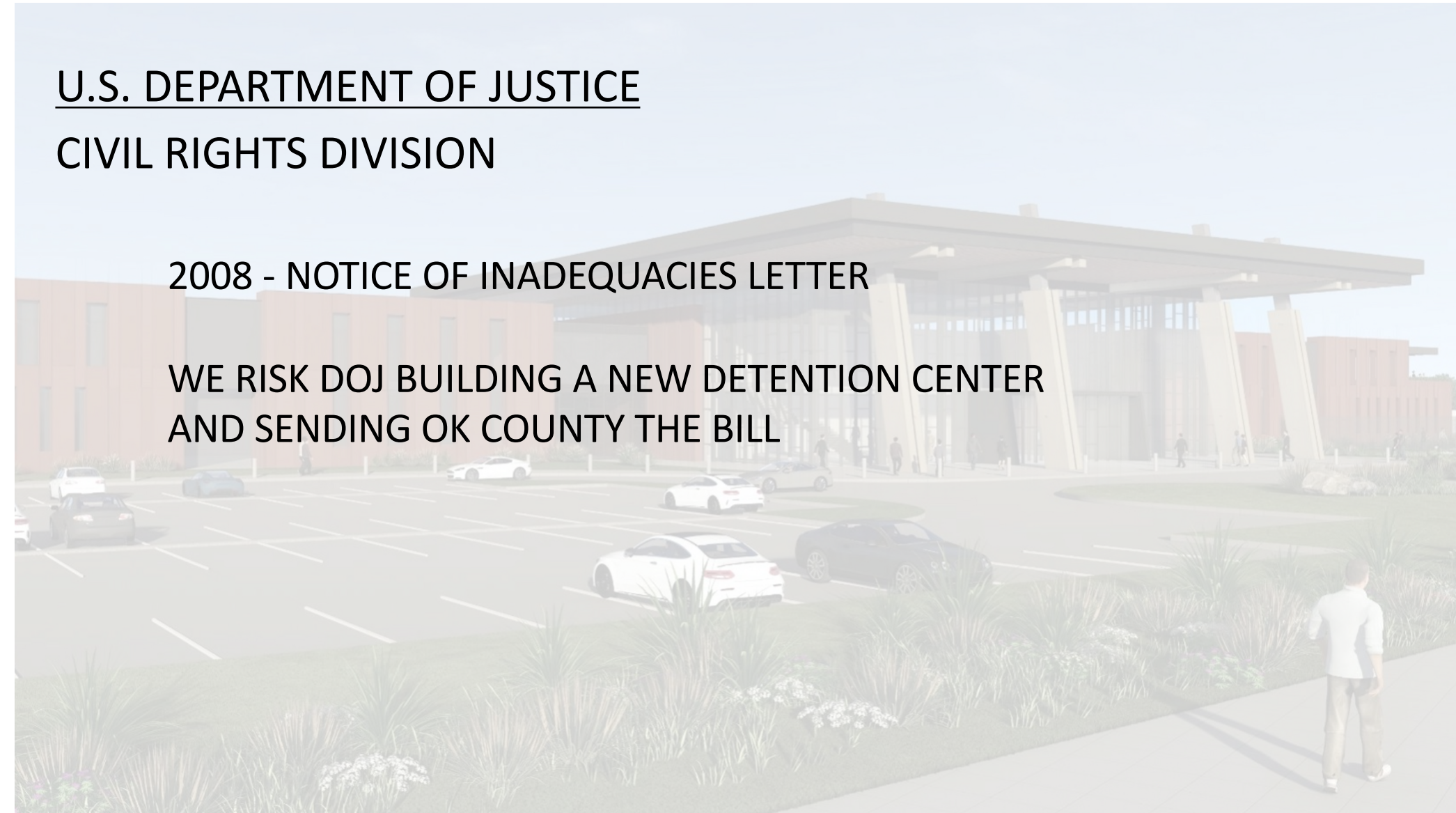
	SUPER VISION	BEDS PER CELL	BEDS PER Pod	# of Pods	# of Beds	% of Bed Type	# Male Pods	# of Male Beds	% of Male Beds	# Female Pods	# of Female Beds	% of Female Beds	# of Pods
DETENTION BEDS													
MAX.	Direct/Ind.	1	28	10	280	15%	8	224		2	56		10
MAX./MED.	Direct	2	56	18	1008	54%	14	784		4	224		18
MED./MIN.	Direct	2	56	8	448	24%	6	336		2	112		8
DORM.	Direct	72	72	2	144	8%	1	72		1	72		2
				38	1880	100%	29	1416	75%	9	464	25%	38
BEHAVIORAL HEALTH BEDS													
Behavioral Care Center Housing - Non-Incarcerated	Direct	2	20	4	80	18%	2	40		2	40		4
Severe - Intensive Treatment Unit	Direct	1	varies	2	30	7%	1	20		1	10		2
Better - SP1 Suicide Watch	Direct	2	varies	2	30	7%	1	20		1	10		2
Better - Intensive Step-Down Unit	Direct	2	varies	2	84	19%	1	56		1	28		2
General - Transitional Housing	Direct	4	56	2	112	25%	1	56		1	56		2
General - Long-Term Housing	Direct	4	56	2	112	25%	1	56		1	56		2
				14	448	100%	7	248	55%	7	200	45%	14
			Total Beds		2328								52

Bed Counts

U.S. DEPARTMENT OF JUSTICE
CIVIL RIGHTS DIVISION

2008 - NOTICE OF INADEQUACIES LETTER

WE RISK DOJ BUILDING A NEW DETENTION CENTER
AND SENDING OK COUNTY THE BILL



THE NUMBERS

2021 BOND ISSUE \$ 260 M
AVAILABLE FOR CONSTRUCTION \$ 220 M

JAIL CONSTRUCTION BUDGET \$ 680 M

BEHAVIORAL HEALTH BUDGET \$45 M
AVAILABLE ARPA FUNDING \$50 M

OK COUNTY BONDING CAPACITY \$ 200 M

COUNTY SALES TAX?

QUESTIONS

